

# ACCESS MANAGEMENT PUBLIC HEARING



## Sections 3A, 3B & 5 Design Projects In Lake County

Financial Project ID: 238275-2, 238275-3, 238275-8



**WHAT:** The Florida Department of Transportation (FDOT) is holding an access management public hearing regarding the (SR 429) Wekiva Parkway Sections 3A, 3B and 5 in Lake County. The public hearing is being held to review the latest access management changes.

**WHEN:** Tuesday, July 12, 2016, from 5:30 p.m. to 7:30 p.m.

**WHERE:** Mount Dora Community Building, 520 N. Baker Street, Mount Dora, Florida 32757

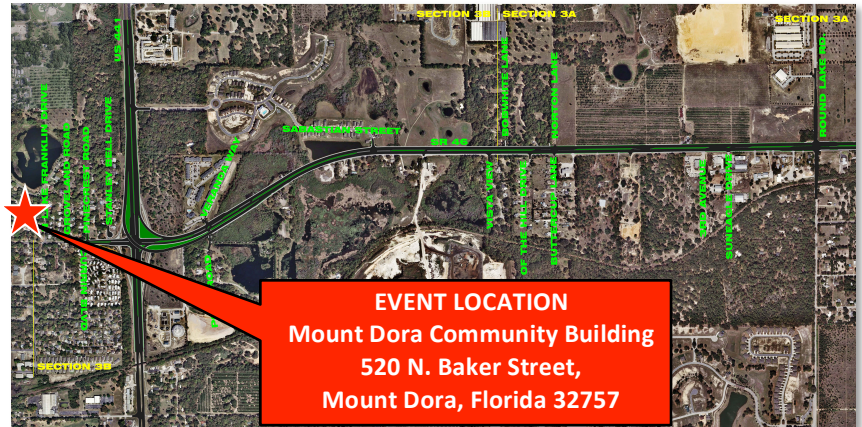
### NOTICE:

Persons with disabilities who require special accommodations under the Americans with Disabilities Act or persons who require translation services (free of charge) should contact Mary Brooks by telephone at (407) 694-5505 or by email at [info@wekivaparkway.com](mailto:info@wekivaparkway.com), at least seven days prior to the meeting. If you are hearing or speech impaired, please contact us by using the Florida Relay Service, 1-800-955-8771 (TDD) or 1-800-955-8770 (Voice).

Public participation is solicited without regard to race, color, national origin, age, sex, religion, disability or family status. Persons wishing to express their concerns relative to FDOT compliance with Title VI may do so by contacting Jennifer Smith, FDOT District Five Title VI Coordinator by phone at (386) 943-5367, or via email at [Jennifer.Smith2@dot.state.fl.us](mailto:Jennifer.Smith2@dot.state.fl.us).

### CONTACT:

**Mary Brooks**  
Public Information Officer  
Quest Corporation of America  
2431 Aloma Ave., Suite 231  
Winter Park, FL 32792  
Phone: 407-694-5505  
[info@wekivaparkway.com](mailto:info@wekivaparkway.com)



### PROJECT DETAILS:

**Section 3A:** The project limits are along State Road (SR) 46 from east of Vista View Lane to east of Round Lake Road. The project consists of designing the widening and other non-tolled improvements to one mile of SR 46 and Round Lake Road. Design improvements will include medians and turn lanes and other roadway features.

**Section 3B:** The project limits are along SR 46 from west of US 441 to east of Vista View Lane in Mount Dora. The 2.4-mile project consists of designing the US 441 flyover interchange at SR 46, as well as road widening. Design improvements will include traffic signals, medians and turn lanes and other roadway features.

**Section 5:** The project involves the non-tolled relocation of County Road (CR) 46A out of the Seminole State Forest, thereby improving habitat connectivity and reducing the risk of conflicts between vehicle and wildlife. CR 46A would be realigned 2.5 miles from north Arundel Way to connect SR 429 east of Camp Challenge Road.

**Construction Cost: \$67 Million**

**Construction Start: 2017**

**Project Duration: 24 months**

